

Understanding

THE LAW
ENFORCEMENT
PROCESS OF THE

CNIL

1 INFRINGEMENT REPORTS



COMPLAINTS*

user reports
on cnil.fr



SELF-REFERRAL

topics identified
as a priority



PRESS

allegations made
in the press
or online



COOPERATION

reports by
other EU data
protection authority

2 INVESTIGATIONS



ON SITE

access to
processing of
personal data



DEPOSITION



ONLINE

if the infringement
can be established
remotely



DEPOSITION

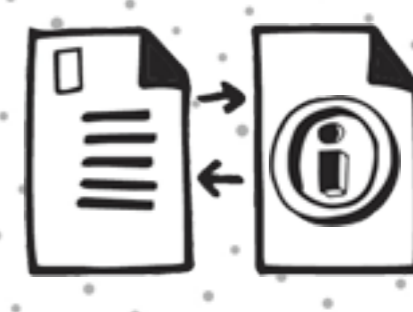


HEARINGS

of the concerned
persons



DEPOSITION



DOCUMENT-BASED

written questions
and requests
for documents

3 OUTCOME OF INVESTIGATIONS

**NONE OR MINOR
INFRINGEMENTS**

**SERIOUS
INFRINGEMENTS**



CLOSURE

of the procedure
and sending of a letter
to the investigated
organization



THE CHAIR

of the CNIL can render
an order to comply



RESTRICTED COMMITTEE

can decide to issue a sanction
to a data controller

A COMPLAINT*
can give rise to an order
to comply or a sanction
without a prior
investigation



CLOSURE

Further
investigation
if necessary



ORDER TO COMPLY

The organization must comply
within a period of 6 months
or 1 year maximum



PENALTY



PUBLIC

Press release
on cnil.fr
and legifrance.fr



NOT PUBLIC



MONETARY

Up to 4% of the total
worldwide annual
turnover or
up to €20M



NON MONETARY

- Warning
- Injunction with
periodic penalty
payment
- etc.